



SAMSUNG

Rugged on the outside, smart on the inside

Stay connected,
productive and secure
with Samsung's latest
Rugged Series – making
tough work feel easier
than ever.



A Samsung rugged smartphone is shown lying on a dark, rocky surface. The phone is dark-colored with a textured back and a visible Samsung logo. The background is a dark, moody landscape with rocks and some dry leaves.

SAMSUNG

Rugged Range

Your ultimate rugged work companion

Those who construct our homes, patrol our streets, and make crucial deliveries need business devices that serve as unwavering companions in tough working conditions.

Protected against the unpredictable.

These business devices must go beyond conventional expectations. They need to be easy to use while tough enough to handle whatever the job throws at them. Introducing the Rugged range of devices, now with new Galaxy XCover7 Pro and Galaxy Tab Active5 Pro models, designed to thrive in harsh work environments.

They not only provide the assurance and reliability that frontline workers have come to expect from Samsung but also offer a wide range of useful and new smart features. They seamlessly blend hard-wearing innovation with the familiarity of a consumer device—sleek, lightweight and

equipped with a brighter, more durable display—they offer the best of both worlds.

Rugged Range

Maximised Productivity

Jobs out in the field are demanding and intensive, requiring multi-tasking, agility and constant attention. Samsung Rugged devices help empower frontline workers with versatility, shortcuts and smart features for quick, intuitive responses in any environment.

Rugged durability

The devices used out in the field, in our factories and on our worksites need to be tough enough to handle anything that their owners can. From bumps and scrapes, to dust and splashes, workers rely on rugged devices that can keep them connected and productive, no matter how harsh the environment.

Work continuity

Frontline workers are often working hands on, meaning it's not always easy to access vital information or communicate with colleagues. The Samsung Rugged Range is designed with these needs in mind—flexible enough to keep up with the demands of the workplace.

¹ 5G requires optimal 5G connection and actual speed may vary depending on market, carrier, and user environment.

² Compared to XCover5

³ Tested in Level 3 'Direct Sunlight' 50k-100k lux

⁴ The device can be used in wet environments, but not fully submerged under water. Underwater touch is not available. Touch sensitivity increases

responsiveness for leather gloves thinner than 2mm or less in thickness, based on internal laboratory test results.

Touch-responsiveness may vary depending on the material and thickness of gloves as well as other environmental conditions.

⁵ MIL-STD-810H test scope: Altitude, Humidity, Immersion, Salt Fog, Dust, Vibration, Drop, and more.

⁶ Compared to Gorilla Glass 6 used in Galaxy XCover5. Twice scratch resistance of Gorilla Glass 6 and 25% more drop protection. Test results of a single Gorilla Glass Victus LCD unit conducted separately by Corning (results on XCover6 Pro may be different).

⁷ Resistant to dust and up to 1.5 metres of fresh water for up to 30 minutes (IP68). Rinse residue/dry after wet. Not advised for beach or pool use.

⁸ Microsoft Teams application and license required. Barcode scanning may require app remapping to programmable key to use full feature.

⁹ POGO charging dock sold separately.

¹⁰ In the case of extra replaceable batteries, only Samsung – certified products are compatible for use.

SAMSUNG

Galaxy Rugged Range

Rugged on the outside, smart on the inside



Resistant to dust and up to 1.5 metres of fresh water for up to 30 minutes (IP68). Rinse residue/dry after wet. Not advised for beach or pool use.

Galaxy XCover | Tab Active



Samsung Knox Security & Knox Suite – Enterprise Plan

Knox Security & Knox Suite **Tough inside and out**

Keep your company data secure with the defence-grade security of Samsung Knox. Built into the hardware and software right from the start, it shields your device from the chip up. Samsung Knox is active on your Rugged device at all times, offering multi-layered security to keep your sensitive data safe from malware and other threats. Enter Knox Suite—an all-in-one package featuring Knox Manage, Knox Platform for Enterprise and more. Knox Suite helps simplify your IT team's workflow and supercharge your employees' productivity, giving you everything you need to secure, deploy, manage and analyse employee devices. And with Enterprise Edition, you get a solid Knox foundation by Samsung, plus options to boost your security and control. Deploy a new device remotely in just minutes¹—with all the settings, apps and company branding you need. It's security and efficiency rolled into one.

Samsung Enterprise Edition **Enhanced support for busy workers**

Handle all your Samsung Rugged device needs effortlessly, even if you don't have a dedicated IT team. With Enterprise Edition, you can enjoy a 3-year warranty for a lower total cost of ownership and added peace of mind. Plus, you get next business-day doorstep replacement.¹ Keep devices safeguarded from mobile threats with up to 8 years of Security and Maintenance releases.² Plus, ensure consistency across your device fleet with the Extended Product Lifecycle.³ And for those keen to explore Knox Suite features, Enterprise Edition offers a Quick Start build service. It's your all-in-one solution for seamless device management.

Rugged on the outside, smart on the inside



Maximised Productivity

Intuitive productivity

- Programmable key (Barcode scanning, mPOS)
- Touch sensitivity, even for gloved hands
- Powerful processors
- Intelligent features¹



Rugged durability

Protected against the unpredictable

- MIL-STD-810H (high/low temp, shock, vibrations)
- Water and dust resistance IP68
- Knox Security across hardware and software
- Biometric authentication
- Tested for resistance to sanitisers



Work Continuity

Flexibility to keep work flowing

- Replaceable battery, No Battery Mode²
- Push-to-talk through Microsoft Teams
- Fast network support anywhere
- PC like desktop experience with DeX³
- Link to Windows
- Range of accessories
- 3-year warranty and enhanced support including next business day doorstep exchange⁴



¹ Available on XCover7 Pro and Tab Active5 Pro from launch. Available on XCover7 and Tab Active as part of One UI 7 upgrade. ² No Battery Mode available on Tab Active devices only. ³ Only available on certain rugged devices. ⁴ Doorstep Exchange with Samsung gold stock.



XCover7

Upgrade to a workphone that's all about the view and the do

Work fast in freedom

- Never miss a thing, wherever you are, with the Galaxy XCover7. Tap into hyper-fast connectivity with 5G¹, making it easier to access the vital data or information you need to carry out tasks in the field.
- And wherever work takes you, you can stay connected with colleagues back at the office or in other locations.
- The Galaxy XCover7 also features Wi-Fi 5, helping you work together and share documents faster. Plus, its dual SIM feature creates one device with two lives—allowing you to seamlessly switch between home and work with ease.

Not just a pretty case

- Get a better view of your work with a larger, brighter 6.6" display². It's a true game-changer when working in rough conditions, or under harsh direct sunlight³.
- The higher resolution display gives you more space to multitask and read documents. You could use multiple windows to view a map or video while you respond to emails, for example.
- And when you are multitasking like a pro, you'll find that typing is more accurate, even with gloves on, or in wet conditions.⁴ The XCover7 is all about simplifying tasks and working comfortably.



Makes the rough, smooth

- The Galaxy XCover7 is like the superhero of rugged phones. It's built to MIL-STD-810H standards⁵, handling everything from bumps and scrapes to dusty environments. It can even survive drops onto steel from an impressive height of 1.5m.
- Gorilla Glass Victus+ gives you enhanced scratch resistance and 25% more drop protection compared with previous models. And with IP68 water and dust resistance, you don't need to worry about rain, dusty warehouses or accidental puddle incidents⁶.
- Plus, it can handle regular sanitising to ensure a clean work environment⁷. Whether you're in a bustling office or out in the field, rest assured, your XCover7 can handle whatever you throw at it.

Fluent in fieldwork

- In demanding environments, the XCover7 works with you, not against you. The programmable key gives you quick access to essential tools—like Microsoft Teams Push-To-Talk, and Barcode Scanning—to help speed up tasks⁸.
- Get things moving with Knox Capture using the phone's camera as a scanner or RFID reader.
- Need your device to charge quickly? 15W fast charging and the built-in POGO pins mean you can recharge rapidly using a POGO dock⁹. And with a replaceable battery¹⁰, your power problems are a thing of the past—getting you through the longest day, even in remote locations.

Capture with clarity

- Keep track of your rapidly changing workplace with crystal-clear photos taken with the Galaxy XCover7's cameras.
- With a 50MP rear camera, you can monitor your work and capture progress in incredible detail, making it easier for everyone in your team to keep an eye on things. And with a 5MP front camera, you can impress on video calls, no matter where you're working.



¹ 5G requires optimal 5G connection and actual speed may vary depending on market, carrier, and user environment.

² Compared to XCover5

³ Tested in Level 3 'Direct Sunlight' 50k-100k lux

⁴ The device can be used in wet environments, but not fully submerged under water. Underwater touch is not available. Touch sensitivity increases responsiveness for leather gloves

thinner than 2mm or less in thickness, based on internal laboratory test results. Touch-responsiveness may vary depending on the material and thickness of gloves as well as other environmental conditions.

⁵ MIL-STD-810H test scope: Altitude, Humidity, Immersion, Salt Fog, Dust, Vibration, Drop, and more.

⁶ Compared to Gorilla Glass 6 used in Galaxy XCover5. Twice

scratch resistance of Gorilla Glass 6 and 25% more drop protection. Test results of a single Gorilla Glass Victus LCD unit conducted separately by Corning (results on XCover6 Pro may be different).

⁷ Resistant to dust and up to 1.5 metres of fresh water for up to 30 minutes (IP68). Rinse residue/dry after wet. Not advised for beach or pool use.

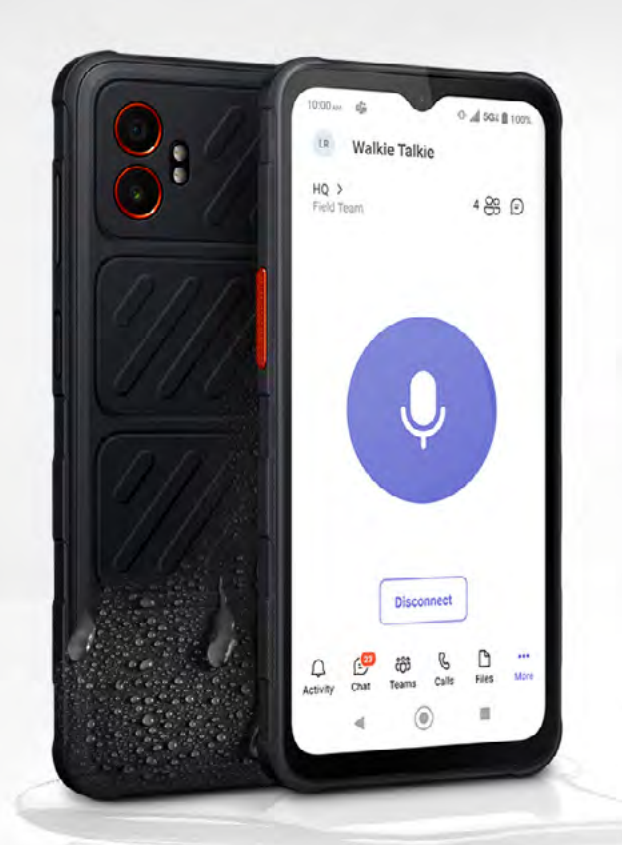
⁸ Microsoft Teams application and license required. Barcode scanning may require app remapping to programmable key to use full feature.

⁹ POGO charging dock sold separately.

¹⁰ In the case of extra replaceable batteries, only Samsung - certified products are compatible for use.

Tackle any work environment

It'll take more than a splash to stop you being productive.



XCover7 Pro

The tough, stylish, smarter connected work phone

Connect and conquer

- Stay connected, no matter where you roam, with the Galaxy XCover7 Pro. Fast and reliable 5G¹ connectivity means that accessing data in the field while staying in touch with teams back at base is easy.
- The Galaxy XCover7 Pro boasts built-in Wi-Fi 6E, ensuring you can work, collaborate and share documents at lightning speed. With Samsung DeX,² your device can power a PC-like experience, allowing you to work on large monitors and with full keyboards. It's like having the power of a desktop right in your hand.

¹5G requires optimal 5G connection and actual speed may vary depending on market, carrier, and user environment. ²Samsung DeX is only available on Galaxy Tab Active5, Tab Active5 Pro and XCover7 Pro.

Strong performance Unstoppable power

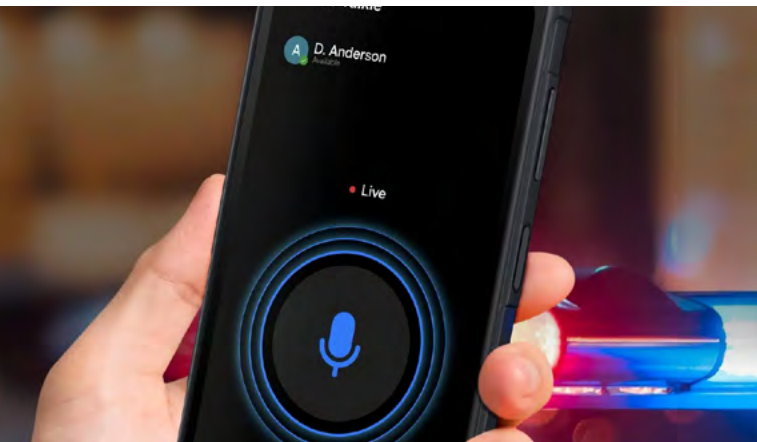
Conquer any challenge with the rugged Galaxy XCover7 Pro. Built for the toughest jobs, it delivers unstoppable performance with the latest Qualcomm® Snapdragon™ 7s Gen 3 processor. Experience lightning-fast speeds and seamless multitasking, enhanced by Intelligent Features¹ that streamline your workflow.

The enhanced fast-charging 4350mAh battery keeps you powered for even longer, even on the job site. And for smarter multitasking, enjoy intuitive search, text read aloud, and AI action suggestions. That's a smarter way to multitask when on the move. Eliminate unwanted noise and feedback loops with louder stereo speakers and anti-howl technology, ensuring crystal-clear communication in every situation

¹ Available on XCover7 Pro and Tab Active5 Pro from launch. Available on XCover7 and Tab Active as part of One UI 7 upgrade

Galaxy XCover7 Pro

Get loud sound
with Stereo speakers



Extremely tough, effortlessly productive

Get ready for action with the phone that's always up for a challenge. The Galaxy XCover7 Pro is built to MIL-STD-810H¹ standards, meaning it can handle bumps, scrapes, dust and dirt—and even drops onto steel from as high as 1.5m. Corning® Gorilla® Glass Victus®+ raises your game with enhanced scratch resistance and a 25% boost in drop protection² compared to its predecessors. You can also stop worrying about rain, dust and other workplace messes, because with IP68 water and dust resistance,³ it'll all slide right off your device. Plus, it copes with being sanitised regularly⁴ to keep it free from germs. So you can work anywhere, confident your device is up to the task.

Adapts to your way of working

Boost your productivity, no matter where you find yourself. The Galaxy XCover7 Pro features two programmable action buttons that you can press to instantly open apps like Microsoft Teams Push-To-Talk¹ or Barcode scanning²—the ultimate productivity booster for any worker dealing with a large number of physical assets. Knox Capture turns your phone's camera into a scanner. Recharge in no time with 15W fast charging via a regular wall outlet or via the POGO dock.³ And with the replaceable battery⁴ you can say goodbye to battery anxiety, even when far from a power outlet.

Productivity protected

Keep your workflow secure wherever you go. Thanks to the built-in Samsung Knox defence-grade security, your Galaxy XCover7 Pro and all its sensitive data are shielded from the most determined malware and malicious attacks. With Knox Suite,¹ device management is made easy, enabling your IT team to remotely enrol multiple devices using either Android Enterprise or Device Administrator. They can even pre-load your business' essential software and applications, customising devices for specific employees—it's like giving everyone a personalised toolkit for work.



¹ Drop test results are to MIL-STD-810H test scope: Altitude, Humidity, Immersion, Salt Fog, Dust, Vibration, Drop, and more. ² Compared to Gorilla Glass 6 used in Galaxy XCover5. Twice scratch resistance of Gorilla Glass 6 and 25% more drop protection. Test results of a single Gorilla Glass Victus LCD unit conducted separately by Corning (results on XCover6 Pro may be different). ³

Resistant to dust and up to 1.5 metres of fresh water for up to 30 minutes (IP68). Rinse residue/dry after wet. Not advised for beach or pool use. Rinse residue/dry after wet. Not advised for beach or pool use. ⁴ Tested Sanitizer: Liquid Ethanol, Ethanol Cotton, Clorox (Chlorine bleach), Medilox HClO.

¹ Additional licenses may be required. ² Availability may vary

by market and model. Barcode scanning may require app remapping to programmable key to use full feature. ³ POGO charging dock sold separately. ⁴ Additional batteries sold separately.



Tab Active5

Our toughest tablet yet for a portable PC – like experience

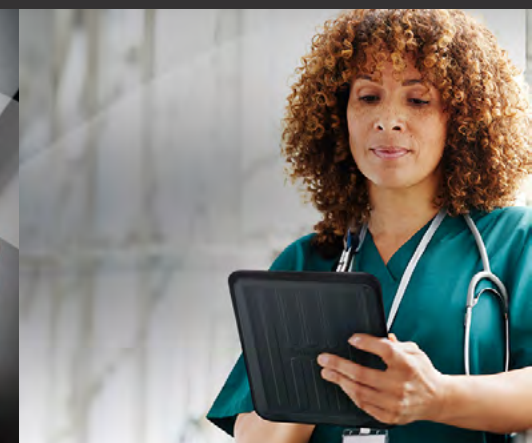


More than tough enough

- Take on the toughest work settings without worrying about device damage. The Galaxy Tab Active5 is IP68¹ and MIL-STD-810H compliant, meaning it can withstand splashes, dust and drops². Its display is shielded by resilient Corning Gorilla Glass5. Even the included S Pen is IP68 compliant, so you'll have no worries scribbling in wet conditions.
- Whether you're sketching in the rain or accessing data atop a telephone tower, the Tab Active5 can handle the pressure like a pro. Tough, reliable and ready to face hectic days ahead.

Press to impress

- Get more done with just a single click–no need to take off those thick gloves. Press the Galaxy Tab Active5's handy physical Active Key and hey presto, launch any app you want in an instant–perfect for when your hands are full. Plus, administrators can even map the Active Key fleet-wide with Knox Mobile Enrollment for the ultimate in efficiency.
- The Tab Active5 features a brighter screen³ with Vision Booster, making workstreams easier to navigate. Plus, with Microsoft Teams⁴ push-to-talk voice calls, your Tab Active5 transforms into a powerful walkie-talkie. Take it anywhere, even into bustling environments.



Work smarter, not harder

- When one screen just won't do, why not double up? With Wireless DeX mode, you can enjoy a PC-like experience on your Galaxy Tab Active5. Display content on a secondary screen while keeping tabs on other apps right on the tablet—it's the ultimate multitasking companion.
- Included as standard with the Tab Active5 is the water – and dust-resistant S Pen. Yes, even the accessories are rugged. It's not just any pen either – it gives you and your team ultimate control for editing, note taking, annotating and sketching. With super low latency, writing with it is like putting pen to paper, but in the digital world.
- The Knox Capture scanning app⁵ also turns your device into an innovative barcode scanner, handling multiple barcodes at once. Say goodbye to the hassle of additional handheld scanners – it's all about efficiency and getting tasks done, quickly and efficiently.

Your next task, super fast

- Stay connected with your team, no matter how challenging the terrain. The Tab Active5 has got your back with both Wi-Fi 6 and 5G mobile connectivity⁶ – your lifeline when support is just a call away. Whether you're navigating a bustling store or deep within a warehouse, count on reliable connectivity.
- Wi-Fi 6 is a game-changer, ensuring seamless roaming between access points and ultimate performance, even with a flurry of connected devices. Add in the low latency and reliability of 5G, and you've got real-time data sharing at your fingertips, wherever you roam. Plus, dual-band GPS provides pinpoint location tracking, coupled with Knox Asset Manager to keep tabs on those missing devices. With the Tab Active5, work confidently, knowing you're covered, no matter where your work adventure takes you.

Keeps pace with progress

- Conquer the toughest workdays without missing a beat. The Tab Active5 is a powerhouse inside and out. Fuelled by a Exynos 1380 processor and memory that is expandable to up 1TB with a MicroSD card⁷, this tablet is ready for any task you throw at it.
- Snap, scan and record with ease using the 13MP rear camera and 5MP front-facing camera. And keep doing what you're doing for longer, thanks to the swappable 5,050mAh battery⁸. Charge up in a flash with USB-C or POGO pins⁹ – no more waiting around.
- Even if your device is plugged into a kiosk or vehicle, it can keep on running without a battery using No Battery Mode¹⁰. It's like the Tab Active5 never wants the workday to end.



¹ IP68 is based on test conditions for submersion in up to 1.5 meters of freshwater for up to 30 minutes. Not advised for beach or pool use. Water or dust damage not covered by warranty. Rinse residue/dry after wet. Not advised for beach or pool use.

² Device tested to withstand drops up to 1.8m with protective cover.

³ Compared with Tab Active3.

⁴ Microsoft Teams application and license required

⁵ Knox Capture requires separate app installation and license purchase for use. Availability may vary by market and model. Barcode scanning may require app remapping to programmable key to use full feature.

⁶ 5G requires optimal 5G connection and actual speed may vary depending on market, carrier, and user environment.

⁷ MicroSD card sold separately.

⁸ Typical value tested under third-party laboratory condition.

⁹ Typical value is the estimated average value considering the deviation in battery capacity among the battery samples tested under IEC 61960 standard. Actual battery life may vary depending on network environment, usage patterns and other factors.

⁹ POGO charging dock sold separately.

¹⁰ Need to turn on "No Battery Mode" and use a dedicated USB Type C power source accessory (9V/2.3A, PD2.0). Cradle and power source accessory sold separately. No Battery Mode limits device's CPU/GPU performance and reduces maximum volume, and display brightness, when enabled.

Meet your new rugged workmate

Everything will still go to plan, even if you drop it.



Active5 Pro

The tough tablet making tough jobs easier

Take on any conditions

- Tackle the toughest environments worry-free with the Galaxy Tab Active5 Pro. With a resilient Corning® Gorilla® Glass Victus®+ display, it'll stand up to heavy-duty use. It's also IP68¹ and MIL-STD 810H tested, so splashes, dust and drops up to 1.5m will not be an issue.² Plus, the included S Pen is also IP68 compliant, so even wet conditions won't throw it off course.
- Signing off reports in a dusty factory? Accessing plans from the top of a construction site? Battling through the rain to make a deadline? The Galaxy Tab Active5 Pro is your fearless companion for truly rugged work.

¹ IP68 is based on test conditions for submersion in up to 1.5 meters of freshwater for up to 30 minutes. Not advised for beach or pool use. Water or dust damage not covered by warranty. Rinse residue/dry after wet. Not advised for beach or pool use.

² Device tested to withstand drops up to 1.8m with protective cover

Built for the busy

- Level up your productivity with the push of a button—even if you're wearing thick gloves.¹ Simply press the physical Active Key on the Galaxy Tab Active5 Pro to instantly launch your chosen app. Not only does it make multitasking a breeze, it means you can act fast and respond to emergencies in an instant. Now, with seamless payments via front tagging NFC, transactions are lightning fast. Administrators can take control and manage the mapping for the Active Key across your entire fleet with Knox Mobile Enrolment.² Plus, with Microsoft Teams³ push-to-talk voice calls, your Galaxy Tab Active5 Pro transforms into a powerful walkie-talkie. And with the enhanced Screen Vision Booster, enjoy crystal-clear visibility, even in sunlight. Take it anywhere, it's easily at home in bustling.

¹ Touch sensitivity increases responsiveness for leather gloves thinner than 2mm or less in thickness, based on internal laboratory test results. Touch-responsiveness may vary depending on the material and thickness of gloves as well as other environmental conditions.

² Wi-Fi connection required. ³ Microsoft Teams application and license required



Pro-level productivity

- You don't need a big workstation for a PC-like experience—just this powerful, portable tablet. With Wireless DeX, display content on a secondary screen while keeping apps open. And for smarter multitasking, enjoy intuitive search, text read-aloud, and AI action suggestions. That's a smarter way to multitask when on the move. Give your teams ultimate control for editing, noting, and sketching with the built-in S Pen. And don't worry, it's IP68 rated, so it's just as tough as the tablet itself. Cut down on hardware: Knox Capture¹ turns your device into a powerful, flexible barcode scanner.

A lifeline for the frontline

- Keep your team and your vital data by your side, wherever work takes you. With both Wi-Fi 6E and 5G¹ connectivity, the Galaxy Tab Active5 Pro will prove a vital lifeline that you can rely on when out in the field, stuck deep in the heart of a warehouse, or just checking stock in store. Thanks to the flexibility of Wi-Fi 6E, you can hop between access points without skipping a beat or dropping out of a call, even with a whole team's worth of devices on the same network. And if you're out in the field away from a router, 5G means you'll never be more than a call or message away from your teams.

Tough outside, powerful inside

- Power through your toughest workdays. The Galaxy Tab Active5 Pro is tough inside and out. Featuring an Octa-Core Snapdragon™ 7s Gen3 processor, it takes performance to a new level.¹ Combine this with 8GB RAM and 256GB storage, plus expandable micro-SD storage,² and it's a true portable powerhouse.
- Snap, scan, and record with the 12MP rear camera, and enjoy clear calls with the 8MP front camera. The swappable 10,100mAh battery³ has you covered. Dual hot-swap lets you replace the battery without powering down, for uninterrupted productivity. Or charge via USB-C or POGO pins.⁴ It can even run without a battery via No Battery Mode.⁵



¹ Knox capture is part of Knox Suite 1 year free of cost, with the purchase of subsequent years.

¹ 5G requires optimal 5G connection and actual speed may vary depending on market, carrier, and user environment

¹ Versus Tab Active4 Pro. ² Micro-SD card sold separately. ³ Additional batteries sold separately. Typical value tested under third-party laboratory condition. Typical value is the estimated average value considering the deviation in battery capacity among the battery samples tested under IEC 61960 standard. Actual battery life may vary depending on network environment, usage patterns and other factors.

⁴ POGO charging dock sold separately. ⁵ Need to turn on "No Battery Mode" and use a dedicated USB Type C power source accessory (9V/2.3A, PD2.0). Cradle and power source accessory sold separately. No Battery Mode limits device's CPU/GPU performance and reduces maximum volume, and display brightness, when enabled.



SAMSUNG

Why XMA and Samsung?

At XMA, exceptional isn't just a goal, it's our foundation. Our specialist teams, deeply versed in your industry's unique demands, are architects of smarter, more sustainable business outcomes.

Choose Samsung rugged devices from XMA and empower your frontline with tools built by a trusted leader. Samsung's unwavering commitment to environmental, social, and governance (ESG) principles mirrors our own, ensuring unwavering alignment towards a shared vision.

Rest assured, your journey towards a modernized workforce is built on a sustainable foundation. We seamlessly handle WEEE-compliant disposal of legacy devices, leaving you free to focus on what matters most – progress.

Ready to unlock new levels of efficiency
across your business? Get in touch today

Find out more

